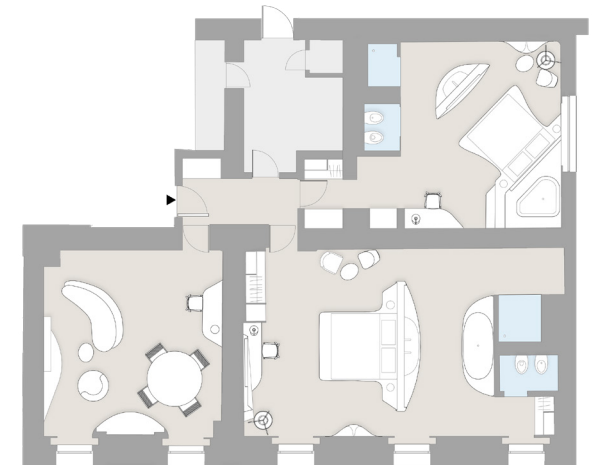


GRAND SUITE

Located on the fifth floor, the Grand Suite offers an extraordinary panoramic view of the city, elegant ebony wood interiors, two rooms with a king size bed in each, with a separate living area from the sleeping area, a kitchen and a Kinesis machine. Each bathroom is equipped with a TV, a shower cabin with steam room, a free standing bathtub and a double sink.



- 154 smq
- Maximum 4 guests and a baby up to 2 years old. Cot available upon request
- 2 double beds